



# MobIR<sup>®</sup> M3

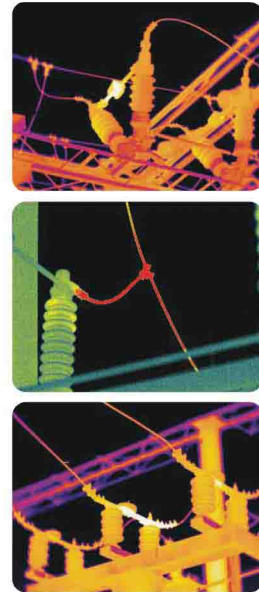
## Groundbreaking IR Thermal Radiometric Camera MobIR is a mobile-like IR camera<sup>®</sup>

**A new member of MobIR family**  
**A turnkey system at a revolutionary price**

### Standard Configuration:

- IR Camera with laser locator
- 13mm IR lens
- 2.2 Two rechargeable Li-ion batteries
- Battery charger
- Earphone
- USB extension cable
- Video cable
- Post-analysis software
- User manual
- Leather sheathe
- Soft carry bag
- Packing case

Smallest, lightest and versatile, MobIR<sup>®</sup> M3 sets a new baseline for the most cost-effective IR thermal cameras in the world. Featured finger-tip controls, stunning imaging performance, precise full-screen temperature measurement, efficient image processing and plug-and-play USB connectivity, it opens large new markets to the benefit of infrared technology. Performing a way none IR system can and priced at the lowest level in the market, its application is limited only by your imagination.



### Features & Benefits

- High performance at bottommost price
- Ultra-compact, robust & easiest to use
- Accurate radiometric temperature measurement
- Advanced on-board image processing
- Integrated alarming, hot-spot tracing & laser locating
- Digital image storage with voice recording
- Versatile fast USB connectivity
- Professional analysis & reporting software
- License free & rapid delivery



## Technical Specifications

Imaging Performance	
Detector Type:	Focal plane array (FPA) uncooled microbolometer ; 160×120 pixels, 35um
Spectral Range:	8 to 14 μ m
Thermal Sensitivity:	≤120mk at 30°C
Image Frequency:	50Hz PAL/60Hz NTSC, non-interlaced
Field of View:	25° × 19°
Electronic Zoom:	×2
Image Presentation	
External Display:	2.2" TFT & 1.2" CSTN high resolution color LCD
Display Color:	256 level, 5 palettes
Video Output:	PAL/NTSC, composite video
Measurement	
Temperature Range:	-20°C ~ +250°C
Accuracy:	±2°C or ± 2% of reading
Measurement Modes:	Spot, area, isotherm, line profile, auto hot spot, auto alarm
Emissivity Correction:	Variable from 0.01 to 1.00 (in 0.01 increment)
Measurement Features:	Automatic correction based on user input for reflected ambient temperature, distance, relative humidity, atmospheric transmission and external optics
Image Storage	
Type:	Built-in Flash memory
Capacity:	100 images
Voice Annotation:	Variant for different files, up to 30 seconds per file
System Status Indication	
LCD Display:	Display of battery status, indication of power
Sound Alarm:	Automatic alarm for power shortage
Laser Locator	
Classification:	Class 2
Type:	Semiconductor AlGaInp Diode Laser; 1mW/635nm (red)
Battery System	
Type:	Li-ion battery, rechargeable, field replaceable
Operating Time:	Over 2 hours continuous operation
Charging System:	In camera via USB interface from AC adapter (96- 250 VAC) or in battery charger
Power Dissipation:	2W
Environmental	
Operating Temperature:	-20°C ~ +60°C
Storage Temperature:	-20°C ~ +60°C
Humidity:	Operating and storing 10% to 95%, non- condensing
Encapsulation:	IP54
Shock:	Operational: 25G, IEC 68-2-29
Vibration:	Operational: 2G, IEC 68-2-6
Interfaces	
USB1.1:	Image, measurement and digital video transfer to PC
Physical Characteristics	
Size:	120mm × 60mm × 30mm
Weight:	0.265kg (including battery)

Wuhan Guide reserves the right to make changes without prior notice.